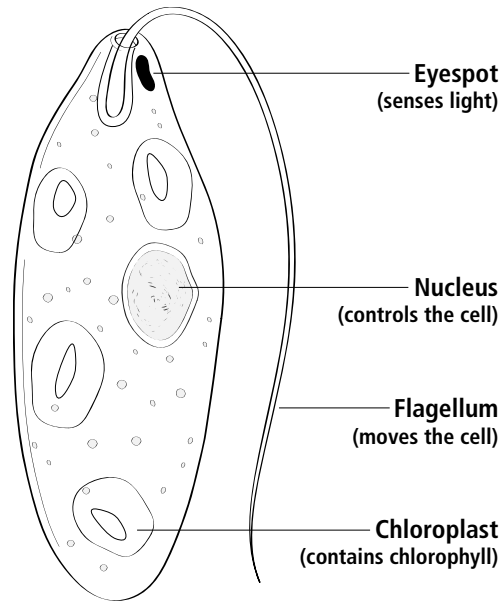


Euglena



Euglenas are one-celled algae. Look for tiny green organisms moving on the slide. When you see a euglena, look for the structures shown in the diagram.



Movement A euglena moves by whipping its flagellum around like a helicopter propeller.

Feeding A euglena has chloroplasts that contain chlorophyll. When light is available, the euglena makes its own food the way a plant does. When there is not enough light for photosynthesis, the euglena acts like an animal and captures food.

Reproduction When a euglena gets too large, it divides in half. The nucleus splits, too.

Size 35 μm

Answer the following questions.

- ❶ How many euglenas would fit end to end in 1 mm?

- ❷ How does a euglena find light?

