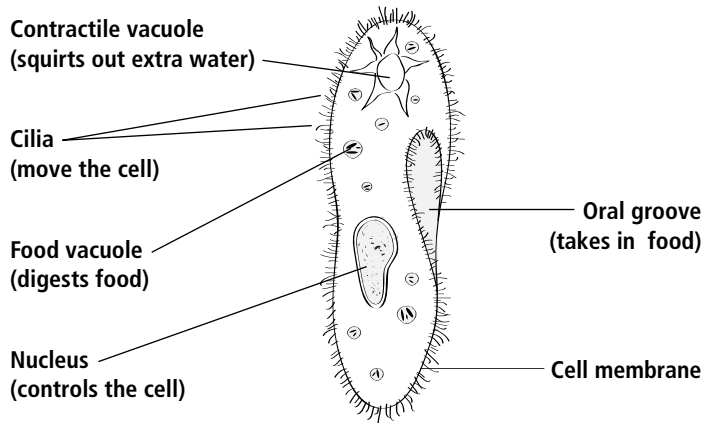


Paramecium



A paramecium is a one-celled protozoan. Look for organisms that are shaped like the sole of a shoe. When you see a paramecium, look for the structures shown in the diagram.



Movement A paramecium moves like a bumper car. The cell is covered with cilia. The cilia beat back and forth to move the cell. Switch the microscope to high power to see the cilia moving.

Feeding A paramecium feeds on bacteria and other tiny organisms. Cilia push the food into an opening called the oral groove.

Reproduction When a paramecium gets too large, it divides in half. The nucleus splits, too.

Size 180 to 300 μm (Three to five paramecia would fit in 1 mm.)

Answer the following questions.

- ❶ Water enters the paramecium with its food. Which structure lets the paramecium get rid of extra water?

- ❷ What might happen to the paramecium if it didn't have that structure?
